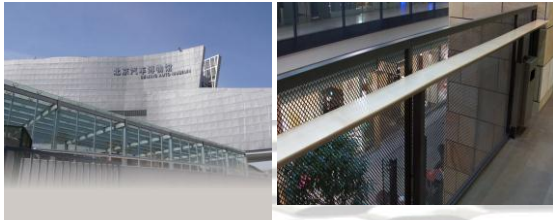
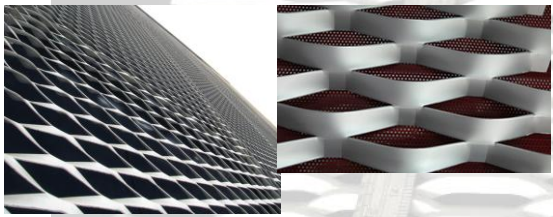


**Expanded Mesh perforated panel**  
for Floor, Interior wall, External wall curtain, ceiling, Compartment partitions or Fencing etc.

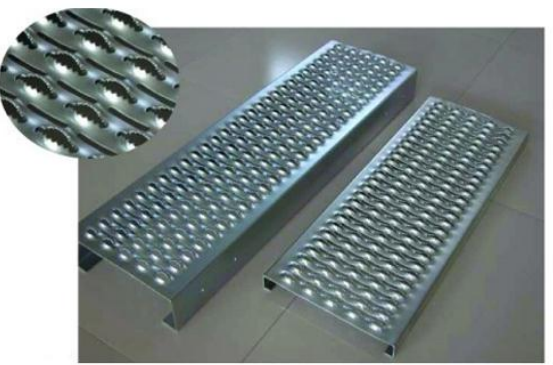


**FILO** is an expanded Mesh, cut or perforated into 3D or profile for architectural designed WALL CUTAIN, hanging sculpture or fencing panel. It can be in any metal such as Stainless Steel, Aluminum, and Mild Steel etc.



With 300MT cutting capacity, we are in position to meet most type of profile or 3D cutting.

An example is our **DRAGGO** (Anti Climb Mesh) by adding Razor Blade it become a formidable anti climb fence.



It can also be profile into Anti Slip Floor panel on Oil Rig or 3D facet or as sculpture design to be suspended or on wall or ceiling or even

We also manufacture Curtain wall, facade with **Anodizing** for installations into sea area or along the coastal area

Your designs are welcome.

**Material** - 30/07/2012

- Mild Steel Low carbon steel
- Stainless Steel
- Aluminum
- etc.

**Coating**

- Hot dip Galvanizing
- Anti-Statics treated
- Hot Dip PVC / PE coating
- Anodizing Coating
- Spray Coating



Floor Panel - Heels Friendly